

COOLSHAPING<sup>2</sup><sup>TM</sup>

FAT REDUCTION

THE  
COMPLETE  
CRYOLIPOLYSIS  
SYSTEM





COOLSHAPING<sup>2</sup>™



SCULPT PRO  
AESTHETICS

## ABOUT US

At Sculpt Pro Aesthetics, we believe that people shouldn't have to compromise to build their business, so we are dedicated to supplying the most advanced non-invasive medical aesthetic equipment with emphasis on superior quality, clinical safety and unmatched after-sale care.

Comprised of highly trained and dedicated professionals; we work together to design, develop and produce industry-leading equipment that we are confident in, for businesses we believe in.

We pride ourselves in outstanding processes, maintaining extremely high standards of training, marketing support and remarkable customer service. All this to ensure that our clients excel in today's ever-growing aesthetics industry.

Your success is our success; that's why we at Sculpt Pro strive to deliver safe and results-driven solutions to a growing base of consumers across the globe.

Additionally, our devices are manufactured to the highest quality standards, complying with both medical and aesthetic CE and other international legal jurisdictions.

# THE CONCEPT

**The CoolShaping2™ is a highly advanced medical CE-marked Cryolipolysis device engineered to perform safe and effective treatments in reduced treatment time.**

The CoolShaping2™ cryolipolysis treatment is clinically proven to reduce unwanted fat permanently. CoolShaping2™ uses controlled cooling to deliver temperatures as low as -10°C to the target area via its 360° cooling applicators. Due to its highly advanced features, treatments are completed in 40% less time, increasing client turn-around.

# WHY CHOOSE COOLSHAPING<sup>2</sup><sup>TM</sup>

CoolShaping2<sup>TM</sup> is the latest advancement in fat freezing technology, integrating the most powerful features available, including 360° cooling plates, four applicators capability and newly designed C-shaped vacuum cups.



Simultaneous  
use of 4 applicators



25-35 minute  
treatments



360°  
cooling plates



Integrated  
safety features



4 applicator  
size options



Upgraded  
C shaped cup



Clinically proven



Medical CE



# COOLSHAPING<sup>2</sup><sup>TM</sup>

CRYOLIPOLYSIS DEVICE



LARGER  
COOLING  
AREA



360°  
COOLING  
APPLICATORS



35-MIN  
TREATMENT  
TIME



USE UP TO  
4 APPLICATORS  
SIMULTANEOUSLY

4 INNOVATIONS

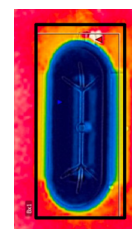




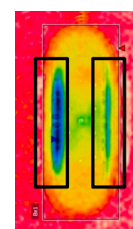


## CoolShaping2™ utilises 360° applicators to achieve unparalleled treatment outcomes.

Standard applicators traditionally use a two-side cooling method. Our 360° applicators offer a 50% increase in cooling surface area, allowing a more significant amount of fat cells to be eliminated per treatment. 360° cooling plates have also been clinically proven to reduce treatment time by 40% compared to standard applicators.



360°  
APPLICATOR



STANDARD  
APPLICATOR

Thermal imaging displays the difference in temperature and cooling surface area of CoolShaping2 360° applicator and previous model (CoolShaping) applicator, when set at -10°C.



The CoolShaping2™ benefits from 4 different sized, newly upgraded 360° cooling applicators. Our latest ergonomic C-shaped cup design with a revamped vacuum channel structure improves comfort and tissue draw, eliminating the possibility of air pockets.

MULTIPLE  
TREATABLE  
AREAS

- ☐ CHIN
- ☐ JAWLINE
- ☐ ARMS
- ☐ ARMPITS
- ☐ BRA ROLL
- ☐ UPPER BACK
- ☐ MALE CHEST
- ☐ UPPER ABDOMEN
- ☐ LOWER ABDOMEN
- ☐ LOVE HANDLES
- ☐ HIPS/SIDES
- ☐ INNER THIGHS
- ☐ OUTER THIGHS
- ☐ REAR THIGHS
- ☐ KNEES



LARGE  
APPLICATOR



MEDIUM  
APPLICATOR



SMALL  
APPLICATOR  
(OPTIONAL EXTRA)



MINI  
APPLICATOR



A woman with long dark hair, wearing a white bikini and sunglasses, is sitting on a large, irregular ice floe in the ocean. The ice floe is white and has a large hole in the middle. The water is a deep blue-green color. The sky is a clear, bright blue.

COOLSHAPING<sup>2</sup><sup>TM</sup>  
CRYOLIPOLYSIS DEVICE

# CRYOLIPOLYSIS

THE RESULTS ARE PROVEN, NOTICEABLE AND LASTING.

The CoolShaping2<sup>TM</sup> has shown to decrease the fat layer in treated treatment areas by up to 40% at three months.

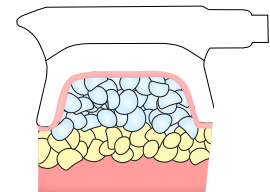
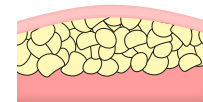


## HOW IT WORKS

The CoolShaping2™ uses controlled cooling, to target and eliminate stubborn fat by triggering the body's natural cell eliminating process - apoptosis.

Our 360° applicators expertly deliver cold temperatures that crystallise fatty tissue without harming the skin and surrounding tissue. This process induces apoptosis, causing the body to flush out the dead fat cells naturally via the lymphatic system.

The CoolShaping2™ has shown to decrease the fat layer in treated treatment areas by up to 40% at three months



# RESULTS

2 SESSIONS



2 SESSIONS



3 SESSIONS



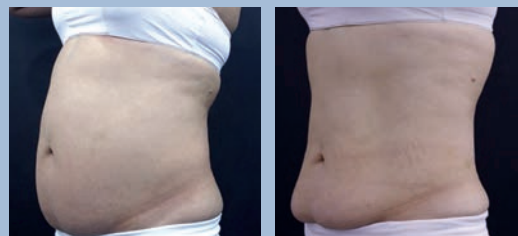
3 SESSIONS



2 SESSIONS



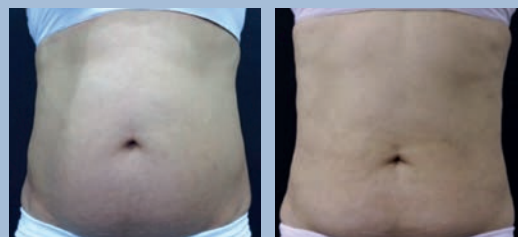
2 SESSIONS



1 SESSION



2 SESSIONS





Numerous studies have been published supporting CoolShaping2™ technology and scientifically proving its efficacy.

Skin Research and Technology 2015; 21: 193–200  
Printed in Singapore. All rights reserved  
doi: 10.1111/srt.12176

© 2014 John Wiley & Sons A/S.  
Published by John Wiley & Sons Ltd  
Skin Research and Technology

### Improved methods for selective cryolipolysis results in subcutaneous fat layer reduction in a porcine model

T.-R. Kwon<sup>1,2,\*</sup>

<sup>1</sup>Classys Inc., Seoul

**Background/aims:** Cryolipolysis is a non-invasive method for the selective reduction of subcutaneous fat. Although it is a well-strated efficacy in both clinical and animal studies, its methods are not yet fully established to improve the treatment results.

**Methods:** The abdomens of 10 pigs were treated with a cooling device (CoolSculpting) using the treatment effects using ultrasonography, ultrasonography, gross dissection, and serum lipid level analyses.

Lasers in Surgery and Medicine

### Systemic Effects of Cryolipolysis in Central Obese Women: A Randomized Controlled Trial

Nabil M. Abdel-Aal<sup>1</sup>, Ahmed E. Elerian<sup>1</sup>, Ayman M. Elmakky<sup>2</sup> and Dina M. A. Alhamaky<sup>3</sup>

<sup>1</sup>Department of Physical Therapy, Basic Science, Faculty of Physical Therapy, Cairo University, Cairo, Egypt  
<sup>2</sup>Department of Physical Therapy for Surgery, Faculty of Physical Therapy, South Valley University, Qena, Egypt  
<sup>3</sup>Department of Physical Therapy for Musculoskeletal Disorders and Its Surgery, Faculty of Physical Therapy, Cairo University, Cairo, Egypt

**Background and Objectives:** To investigate the adding effect of Cryolipolysis to a low-calorie diet program on lipid profile, liver enzymes, body mass index, waist-to-hip ratio, and volume reduction of subcutaneous fat tissue in central obese women.

**Study Design/Materials and Methods:** Sixty central obese women were randomly divided into two equal groups. Women in the control group received prescribed low-calorie diet regimen only, while women in the study group received Cryolipolysis in addition to the low-calorie diet.

TABLE 3. Outcome Data for BMI, Blood Tests, Liver Enzymes, Sonography, and WHR pre and at 3 months Follow-Up for Cryolipolysis Group

Characteristics	Pre	Post	Mean difference	99% CI	Sig.
BMI (kg/m <sup>2</sup> )	37.65 ± 0.85	33.3 ± 1.0	4.35	(3.96, 4.73)	P < 0.001
TSChol (mg/dl)	244.07 ± 6.34	219.63 ± 8.26	24.43	(22.87, 26)	P < 0.001
TG (mg/dl)	187.87 ± 11.67	163.57 ± 12.34	24.3	(22.58, 26.03)	P < 0.001
HDL (mg/dl)	35.33 ± 5.11	56.1 ± 4.18	-20.77	(-22.02, -19.51)	P < 0.001
LDL (mg/dl)	178.37 ± 19.1	156.2 ± 9.69	22.17	(21.4, 22.94)	P < 0.001
ALT (U/L)	75.8 ± 8.06	62.67 ± 4.69	13.13	(11.53, 14.73)	P < 0.001
AST (U/L)	59.6 ± 8.65	46.57 ± 4.75	13.03	(11.67, 14.39)	P < 0.001
Sono. (mm)	3.84 ± 0.04	2.49 ± 0.08	1.35	(1.28, 1.42)	P < 0.001
WHR	0.93 ± 0.03	0.8 ± 0.04	0.13	(0.12, 0.15)	P < 0.001

Data are mean ± SD, P < 0.05 indicates statistical significance.  
ALT, alanine transaminase; AST, aspartate transaminase; BMI, body mass index; CI, confidence interval; HDL, high-density lipoprotein; LDL, low-density lipoprotein; SD, standard deviation; Sono, Sonography; TG, triglycerides; TSChol, total serum cholesterol; WHR, waist-to-hip ratio.

energy-dense, nutrient-poor foods with high levels of

2. Cryolipolysis: 3 Max cool shaping Cryolipolysis device (ESM-8100MO; EunSung global, Korea) was used. Vacuum controllable head with cold temperature range from -10 to 5°C was adjusted according to each patient tolerance, after careful patient sensation examination and vital signs evaluation before and after each session. Each subject in the experimental group received a total of three Cryolipolysis sessions at the hypogastrium area, 5 cm below the umbilicus, for 60 minutes with temperature degree of -5°C using an anti-freezing membrane to avoid cold burn. After starting the device on, the patient was instructed with safety measures to pull the key off if there is any intolerable abnormal sensation. If hyperemia or any abnormal skin condition was observed at the end of any session, stroking massage was performed for 2 minutes [19].

CONCLUSION

Cryolipolysis performed using CoolShaping2™ shows successful reduction of subcutaneous fat and improvement of body profile, BMI, and WHR.

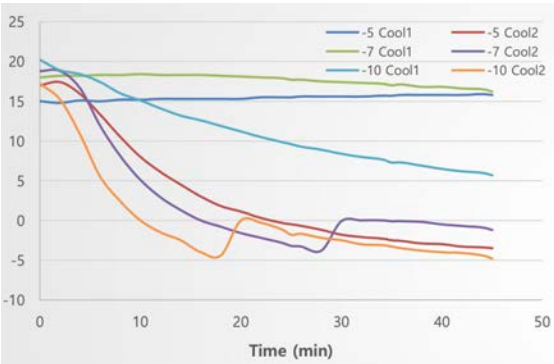
THE EFFICACY OF COOLSHAPING2™ 360°: IN VIVO TESTS

Comparing the Temperature Changes of Fat Layer between CoolShaping™ and CoolShaping2™

Both CoolShaping and CoolShaping2 applicators were tested through in vivo trials. Both studies were carried out simultaneously under the same conditions – subjects were dressed with a cool pad and liner before attaching the applicators.

A temperature probe monitored the fat layer’s temperature, which was measured at 2-minute intervals during the treatment. Immediately after the treatment, the surface temperature of the tissue was measured using a thermal imaging camera.

	SETTING TEMPERATURE	TIME TO REACH 5°C	TIME TO REACH 2°C	TIME TO REACH 0°C	FAT LAYER TEMP. AFTER TREATMENT
-5°C	CoolShaping	>45 min	>45 min	>45 min	15.8 °C
	CoolShaping 2	14 min	18 min	24 min	-3.5 °C
-7°C	CoolShaping	>45 min	>45 min	>45 min	16.2 °C
	CoolShaping 2	10 min	14 min	16 min	-1.2 °C
-10°C	CoolShaping	>45 min	>45 min	>45 min	5.7 °C
	CoolShaping 2	6 min	8 min	10 min	-4.8 °C



CONCLUSION

Coolshaping2 360° applicator led to fat layer temperature reaching below 5°C (optimal temperature for fat lipolysis) when compared to CoolShaping two-sided cooling applicator, where the temperature of the fat layer did not reach below 5°C.

The results also confirm that the cooling effect of CoolShaping2 is gradual and not abrupt, demonstrating its safety.

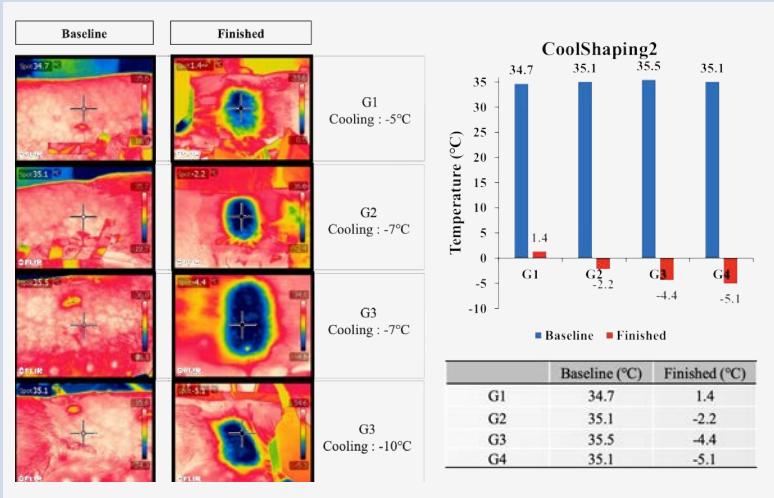
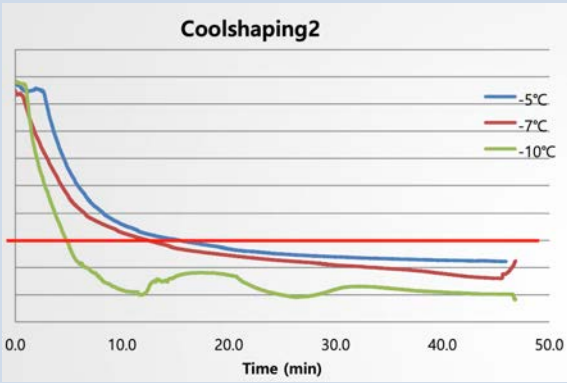
# THE EFFICACY OF COOLSHAPING2™ 360°: IN VIVO TESTS

## Comparing the Temperature of Skin Surface Pre- and Post-Treatment with CoolShaping2™

The CoolShaping2 was tested on an anesthetised porcine, with the applicator placed on top of a cool pad and liner. The porcine was treated for 45 minutes on each setting value.

Using a temperature probe, the temperature of the fat layer was monitored. The time taken to reach 5°C, 2°C, and 0°C was recorded. Immediately after the procedure was completed, the surface temperature was measured using a thermal imaging camera.

SETTING TEMPERATURE	TIME TO REACH 5°C	TIME TO REACH 2°C	TIME TO REACH 0°C	FAT LAYER TEMP. AFTER TREATMENT
-5°C	15.4 min	29.6 min	>45 min	1.16 °C
-7°C	12.5 min	21.2 min	33.7 min	-1.97 °C
-10°C	4.8 min	5.5 min	6.6 min	-4.87 °C



## CONCLUSION

The fat layer reached 5°C (critical temperature for fat lipolysis) in 4.8 minutes when CoolShaping2 was set at -10°C.

The time taken to reach 0°C is rapid (within 7 minutes), which does suggest that there may be a risk of frostbite at -10°C value.

For safe and effective treatment, it was concluded that CoolShaping2 should be used for 35 minutes at -7°C. The procedure can also be safely performed at -5 °C for 45 minutes.

Accordingly, treatment between -5 and -7°C for 25-35 minutes is recommended.



## PACKAGE



## EQUIPMENT & ACCESSORIES

CoolShaping2™ machine

2 x Large applicator

1 x Medium applicator

1 x Mini applicator

1 x Body cushion

1 x Body fat caliper

1 x Band set

3 x Skin markers

3 x Curve markers

30 x Cool pad

30 x Cool liner

2 x Transport case

1 x Operator manual

## OPTIONAL EXTRA

1 x Small applicator

## STARTER PACK & POINT OF SALE

Cryolipolysis training  
(theory & practical)

Training manuals

Access to our training portal

Consultation forms

Aftercare forms

Ongoing clinical support

Members portal access

Marketing material & support

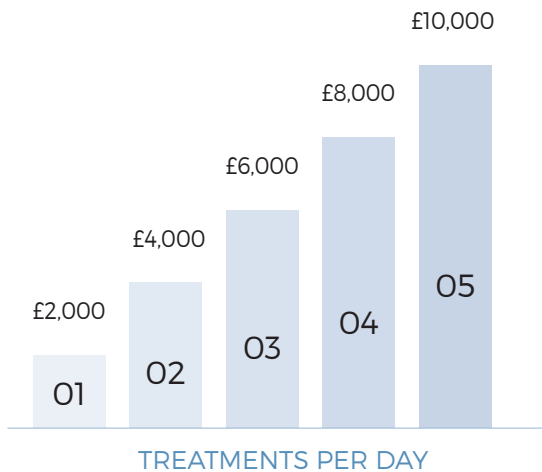
Lifetime technical support

Warranty

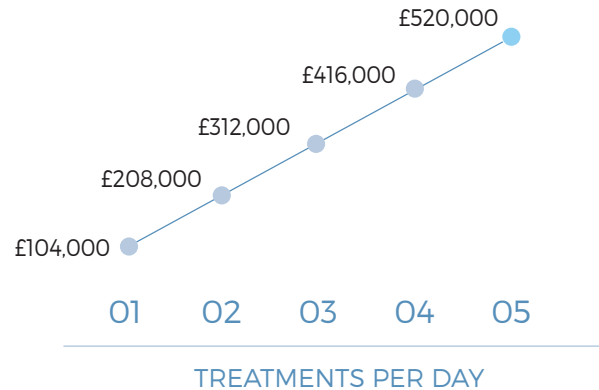
Free UK delivery

# INCREASE YOUR REVENUE

WEEKLY REVENUE



ANNUAL REVENUE



Figures based on a 5 day week and an average treatment price of £400.

# THE SCULPT PRO DIFFERENCE

As a company, we are constantly evolving with the goal of providing our clients with the best possible customer experience. Our Sculpt Pro HQ in Altrincham, Greater Manchester, includes a state-of-the-art showroom, fully equipped training rooms, head office and service centre. Our team is committed to growing with the industry and delivering extensive knowledge in a range of areas.

When purchasing one of our devices, our business package has been specially designed to support your business and ensure a rapid return on investment.

## OUR BUSINESS PACKAGE INCLUDES:

- Coolshaping 2 machine & accessories
- Warranty
- Core of Knowledge training (online)
- Coolshaping 2 & cryolipolysis training (face to face or online)
- Access to our training portal
- Training & user manuals
- Consultation & aftercare forms
- Ongoing clinical support
- Lifetime technical support
- Free UK delivery
- Callout service
- Marketing material & support
- Access to our members portal
- Exclusive discount on consumables & accessories
- Dedicated account manager

## CLINICAL SUPPORT

When you partner with Sculpt Pro, you will receive ongoing clinical support to help give you the necessary confidence to safely and effectively perform treatments.

Should you have any questions or concerns, we have a team of trainers and aestheticians ready and waiting to assist you via our clinical support helpline. Support also includes one-to-one guidance on effective pricing structure and combination packages.

You'll automatically qualify for an exclusive discount on future equipment purchases, consumables, accessories, PPE and much more.



## TRAINING

At Sculpt Pro Aesthetics, we believe that in-depth training is essential before practitioners are certified to operate their device and deliver treatments. Training is included with all of our business packages and is delivered in two sections; online theory training and practical training. Practical training is delivered virtually or face-to-face at our training centre. However, if required, one of our expert trainers can conduct practical training at your location.

All trainees enrolled onto the course will receive theory, practical and operational-based training on our equipment. Our trainers will teach you about anatomy and physiology, theory behind the technology, treatment safety, procedures, client consultation and operation of your equipment, all to help you confidently perform treatments.

All our training courses are CPD accredited, enabling you to obtain insurance easily.



CERTIFICATE ON  
COMPLETION



ONLINE TRAINING  
PORTAL



EXPERT  
TRAINERS





ACCREDITED  
PROVIDER

#779215

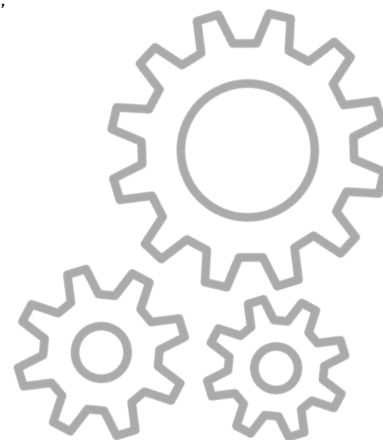
Verify @ <https://thecpdregister.com>





## TECHNICAL SUPPORT

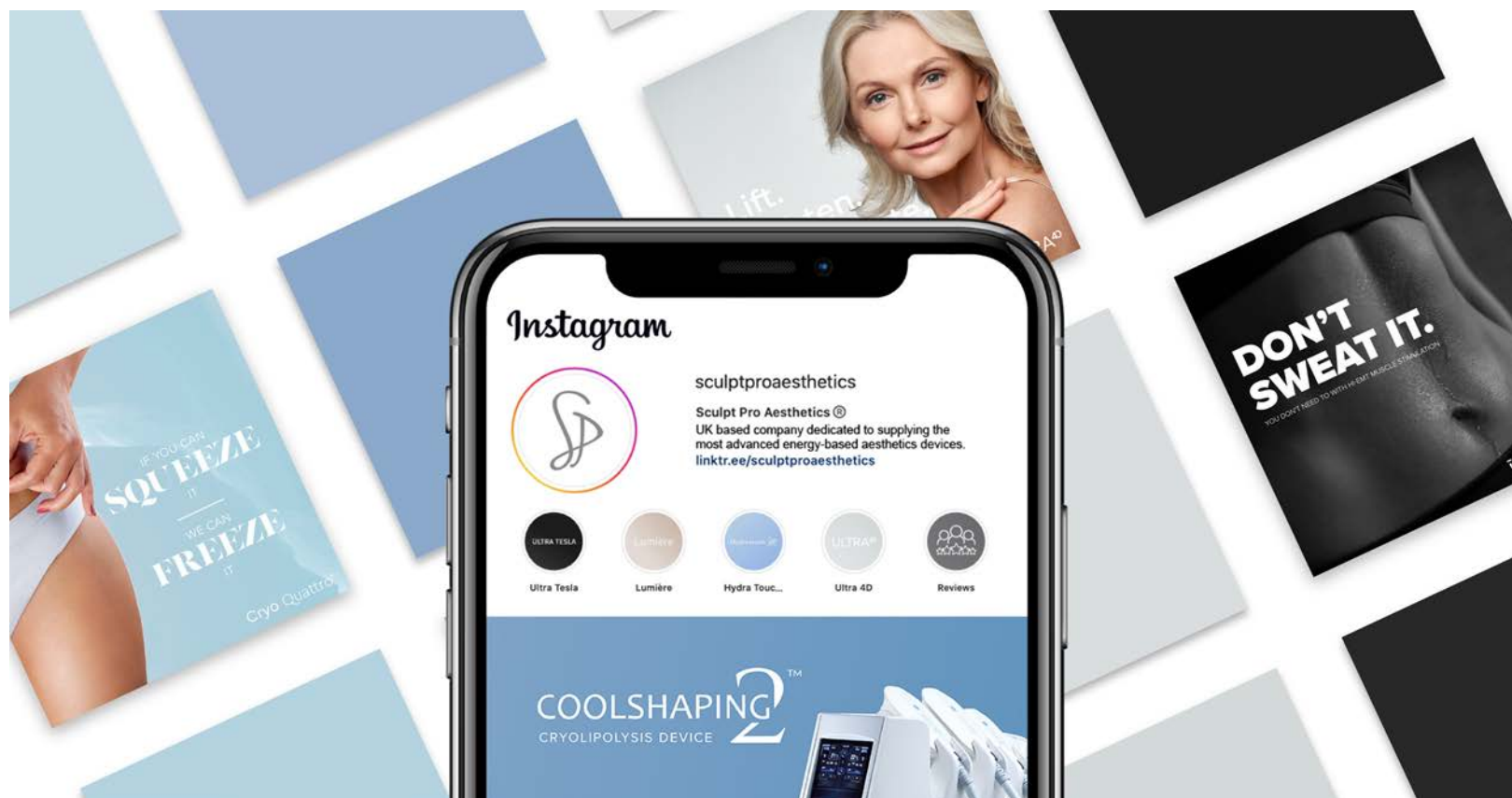
We are incredibly proud of the high standard and reliability of our equipment. However, if you happen to come across any issues, our internal team of technicians can guarantee a quick and timely response. It is vital to keep your clinical equipment operating safely and efficiently; therefore, annual servicing is essential. We offer a range of service plan options, to give you peace of mind that your machine is always running at peak performance.





## MARKETING SUPPORT

We offer comprehensive marketing advice to help you generate demand from the get-go. Free marketing material is provided via our members portal which contains social media content, product imagery and much more. In addition, we provide social media guidance on what to post to create as much awareness as possible for your new device. Additional services such as web design, graphic design, SEO are also available to help maximise your business.





SCULPT PRO  
AESTHETICS

## TECHNICAL SPECIFICATION

Dimensions	50 x 74 x 115cm	Vacuum Pressure	Level 1:- -80mmHg Level 10:- -520mmHg
Weight	99kg		
Power Supply	200-240V, 50/60Hz	Cooling Temperature	5°C to -10°C
Maximum Peak Power	2500W	Warranty	Yes

All specifications are subject to change without notice

CE  
0068



Registered in England and Wales No. 10968111  
Sculpt Pro Aesthetics Ltd, Unit 2 Century Park, Pacific Road, Altrincham WA14 5BJ  
Telephone: 0161 989 3388 | Email: [info@sculptpro.co.uk](mailto:info@sculptpro.co.uk) | Website: [sculptpro.co.uk](http://sculptpro.co.uk)